

LAKESHORE PLAZA

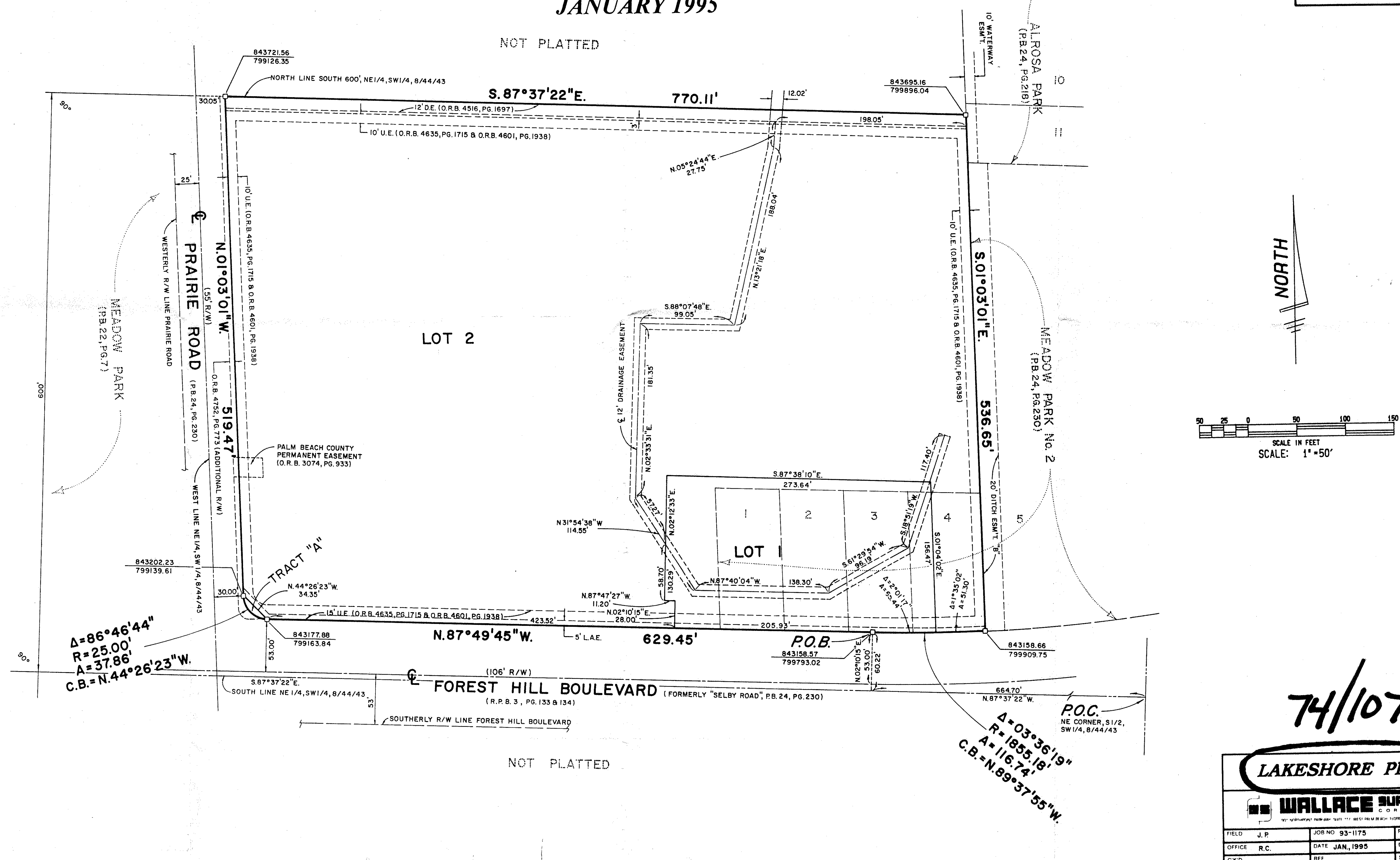
0620-001

107

BEING A PORTION OF SECTION 8,
TOWNSHIP 44 SOUTH, RANGE 43 EAST AND
A REPLAT OF LOTS 1 THROUGH 4,
INCLUSIVE, PLAT OF MEADOW PARK NO. 2,
AS RECORDED IN PLAT BOOK 24, PAGE 230,
PUBLIC RECORDS OF PALM BEACH
COUNTY, FLORIDA.

SHEET 2 OF 2

JANUARY 1995



TAZ - 308

SUBDIVISION - Lakeshore Plaza
 BOOK 74
 FLOOD ZONE B
 QUAD # 17
 ZONING RM
 ZIP CODE 33406
 DATE 8/14/93

74/107

LAKESHORE PLAZA

WALLACE SURVEYING CORPORATION

FIELD J.P.	JOB NO 93-1175	P.B. 24 PG 230
OFFICE R.C.	DATE JAN, 1995	DWG NO 93-1175-1
C.K'D	REF	SHEET 2 OF 2